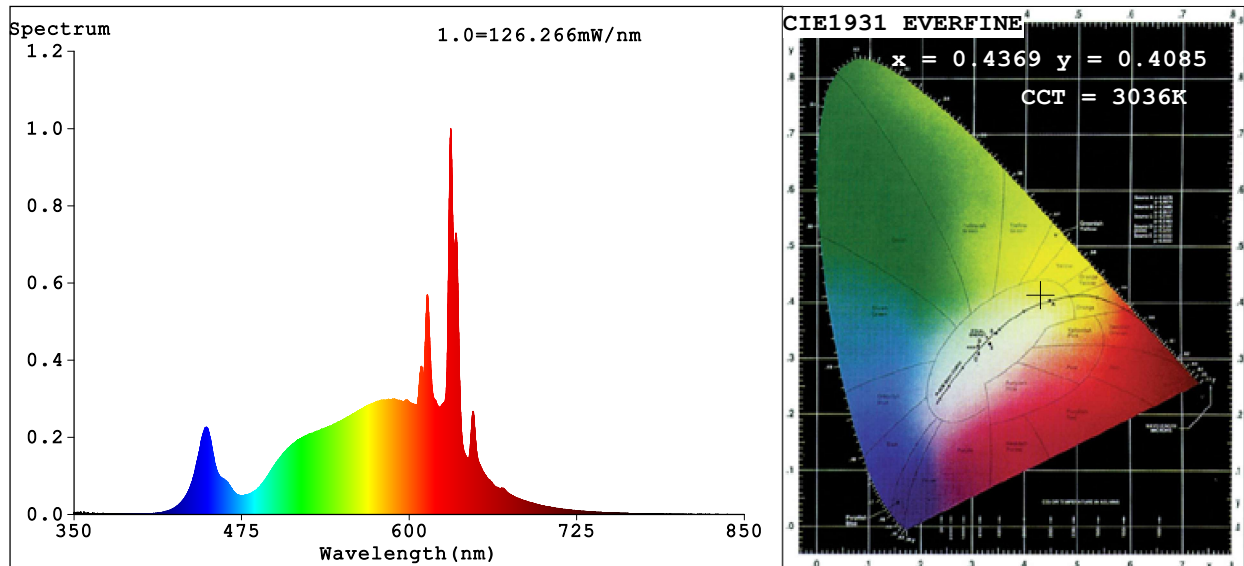


Spectrum Test Report



Color Parameters:

Chromaticity Coordinate: $x=0.4369$ $y=0.4085$ $u'=0.2487$ $v'=0.5231$

CCT=3036K (Duv=0.0018) Dominant WL:Ld =582.1nm Purity=53.8%

Ratio:R=24.1% G=73.7% B=2.3%; Peak WL:Lp=630.9nm FWHM=8.0nm

Render Index:Ra=90.6 CRI=86.8 TM30:Rf=89 Rg=101

R1 =92 R2 =92 R3 =92 R4 =92 R5 =90 R6 =91 R7 =92

R8 =82 R9 =55 R10=81 R11=93 R12=75 R13=91 R14=94 R15=87

Photo Parameters:

Flux = 2337 lm Eff. : 128.15 lm/W Fe = 6.769 W

Electrical parameters:

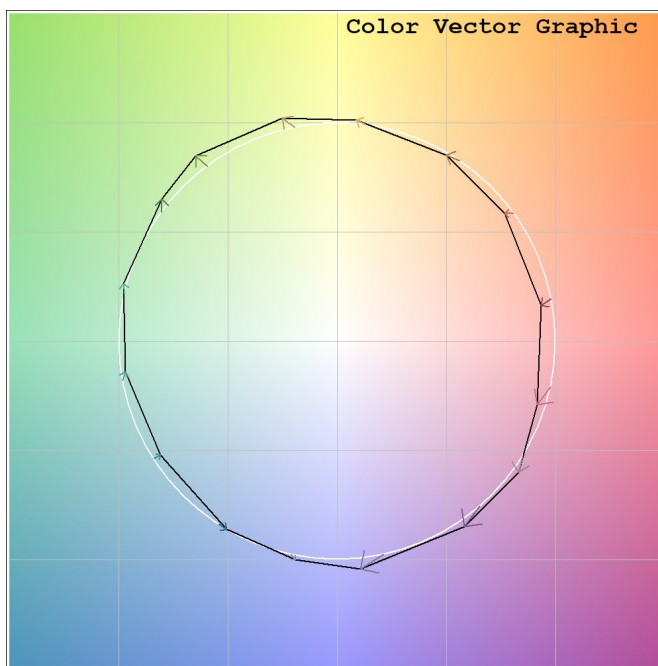
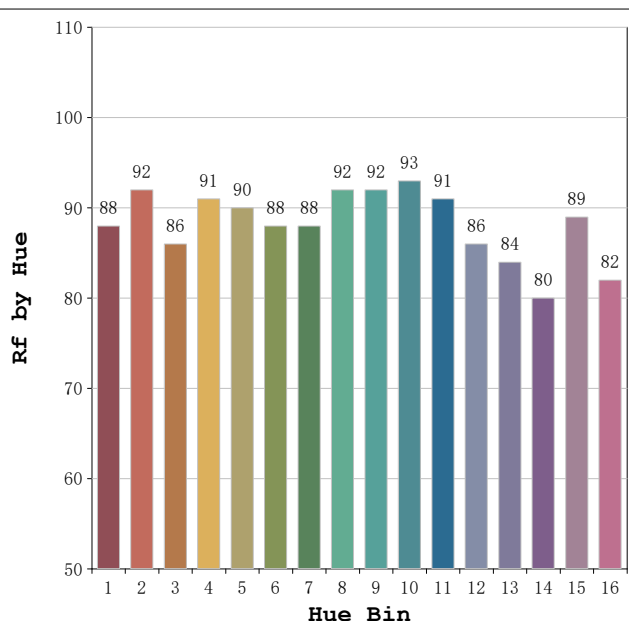
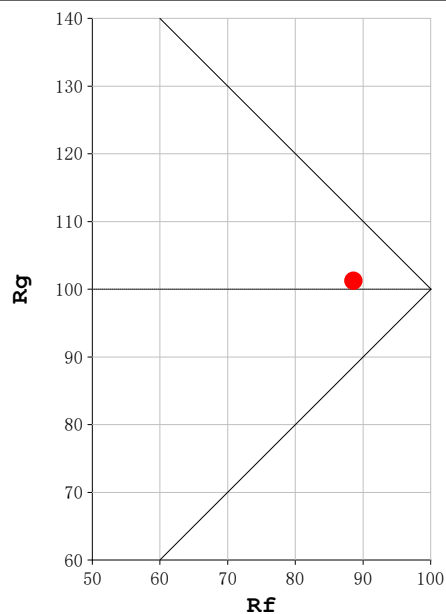
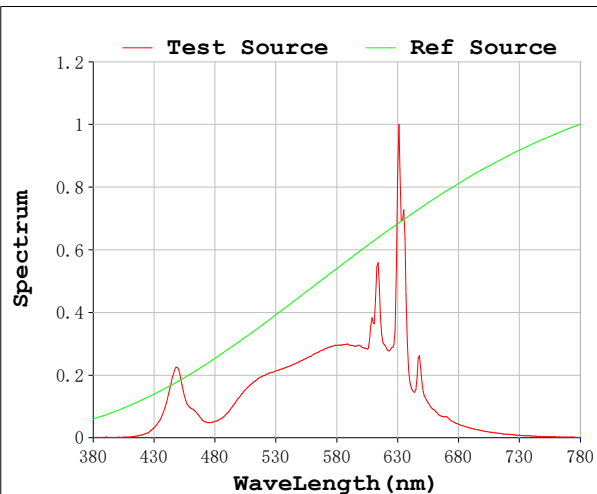
V = 230.16 V I = 0.08808 A P = 18.24 W PF = 0.8996

Status: Integral T = 167 ms Ip = 34391 (52%)

Model:Spotia 18w Blanco
Tester:Sergio Carneros
Temperature:20Deg
Manufacturer:Luz Negra

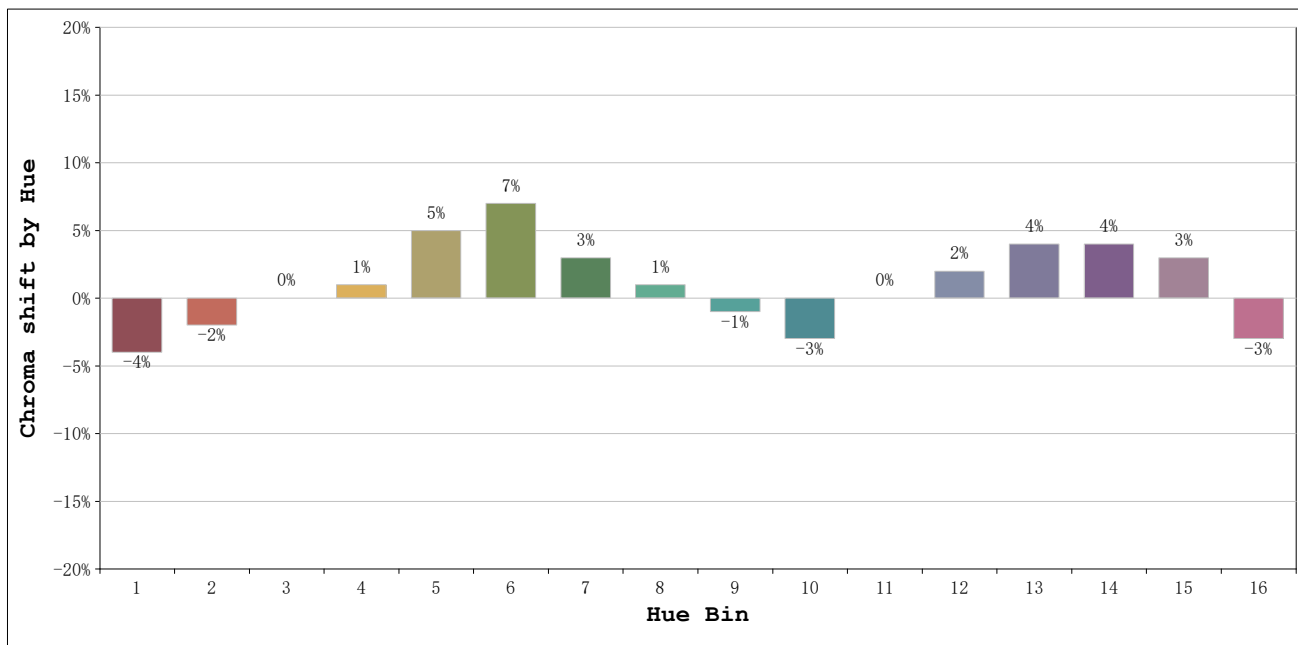
Number:3000k 37°
Date:2026-03-23 15:32:08
Humidity:50%
Remarks:1 unidad

Rf: 89 **CCT: 3036 K** **u': 0.2487**
Rg: 101 **Duv: 0.0018** **v': 0.5231**



Model:Spotia 18w Blanco
 Tester:Sergio Carneros
 Temperature:20Deg
 Manufacturer:Luz Negra

Number:3000k 37°
 Date:2026-03-23 15:32:08
 Humidity:50%
 Remarks:1 unidad



Hue Bin	Hue Angle	Rf	Graphic shift(%)	
			Chroma	Hue
1	0.0° - 22.5°	88	-4	-1
2	22.5° - 45.0°	92	-2	2
3	45.0° - 67.5°	86	0	6
4	67.5° - 90.0°	91	1	5
5	90.0° - 112.5°	90	5	5
6	112.5° - 135.0°	88	7	2
7	135.0° - 157.5°	88	3	-4
8	157.5° - 180.0°	92	1	-3
9	180.0° - 202.5°	92	-1	-3
10	202.5° - 225.0°	93	-3	0
11	225.0° - 247.5°	91	0	4
12	247.5° - 270.0°	86	2	2
13	270.0° - 292.5°	84	4	-11
14	292.5° - 315.0°	80	4	-10
15	315.0° - 337.5°	89	3	-6
16	337.5° - 360.0°	82	-3	-8

Model:Spotia 18w Blanco
 Tester:Sergio Carneros
 Temperature:20Deg
 Manufacturer:Luz Negra

Number:3000k 37°
 Date:2026-03-23 15:32:08
 Humidity:50%
 Remarks:1 unidad